

*create your future*



High Speed, Small Hole Drilling Machines

*K1C/K3HS*

# K1C – Best Selling Hole Driller

Best selling model for over 30 years



## Proven Reliability

The K1C was introduced into the market over 30 years ago. Decades of experience and know-how have made this model not only the most reliable small hole driller available on the market, but also the most wanted model on the second hand machine market.

## Operability

The operation panel and display are centralised at the front, in order that the machine can be operated easily without moving their standing position. A tray for the tools is also provided, and can be found underneath the work tank.

## The Latest Servo Technologies

A new servo function has been developed by accumulating knowledge over several years. Here, optimised servo control is realised which improves the cutting speed by up to 200%.

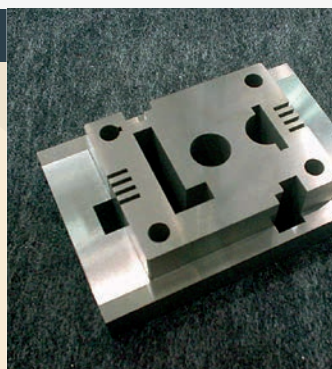
## Wide Range of Cutting Conditions

In order to cover potentially limitless demands from customers, Sodick offers a wide range of cutting conditions.

- Work-piece: Steel, WC, Aluminium, Copper, Graphite
- Material thickness: 10, 20, 50, 100mm
- Electrode diameter: 0.25, 0.30, 0.50, 1.0, 2.0, 3.0mm

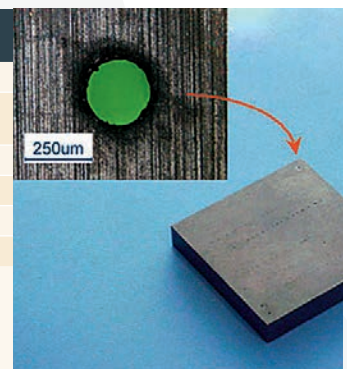
### Start Hole Drilling

A start hole for wire cut EDM can be easily and quickly made by the K1C. Neither specialised skills nor experience are required to work with the machine.



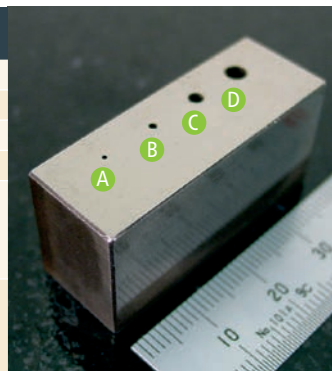
### Through machining

Material	WC
Thickness	10 mm (through hole)
Electrode	Copper pipe
Dielectric fluid	Vitol Fluid
Electrode diameter	ø 0.2 mm
Machining time	3 min 38 sec



### Through-hole

Material	WC
Thickness	20 mm
Electrode	Copper pipe
Dielectric fluid	Vitol Fluid
Electrode diameter	A: ø 0.6 mm
	B: ø 1.0 mm
	C: ø 2.0 mm
	D: ø 3.0 mm
Machining time	A: 5 min
	B: 6 min
	C: 7 min
	D: 6 min



### K1C Options

- Column up (100/200mm)
- 100 litre tank
- 30A booster (electrode up to ø 6.0mm)
- Z-axis digital display

# K3HS – The NC Controlled High Speed Hole Driller

LN Assist is Equipped as Standard for Automatic Programming Automatic Continuous Cutting is Possible



## High Speed Drilling

By coming equipped with "KSMC; Sodick Motion Controller", optimised servo control is realised which improves the cutting speed by up to 200%.

## Fine Feeding

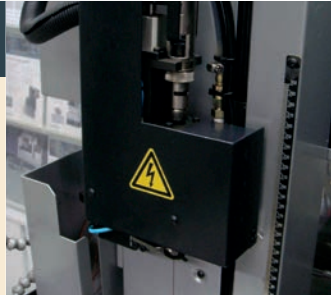
Accurate fine feeding is controlled for stable cutting.

## Features for Unrivalled Performance

- **Automatic Depth Measurement function** is available for blind hole cutting.
- **Through-hole detection:** The K3HS machine comes with through-hole detection function which is ideal for vane and blade production environment.
- **Dielectric fluid:** Customer can choose either de-ionised water or Vitol fluid on factory specification.

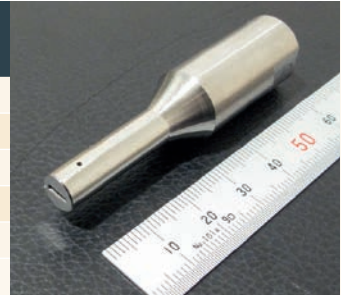
### Automatic Electrode Feeder

AEF (Automatic Electrode Feeder) comes equipped as standard on the K3HS. It enables continuous cutting with several electrodes.



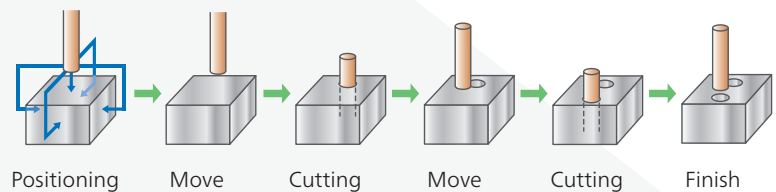
### Hollow titanium, electrolytic corrosion free

Material	64Ti (titanium)
Electrode	BS pipe
Dielectric fluid	De-ionized water
Machining time	12 sec.
Thickness	6.5 mm (hollow)

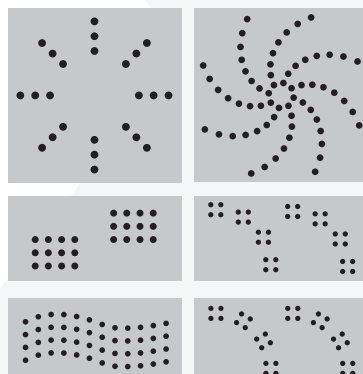
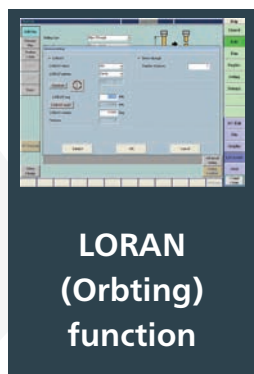


## LN Assist – Easy Operation with Graphic Screen

An automatic programming system, LN Assist, comes as standard on K3HS. Its simplified graphic screen allows for easy operation. As LN Assist is also capable of a series of calculations and macro-functions, operators can easily work with any kind of complex cutting layouts and programmes. A customised function is available where operators can register their own programmes as a utility.

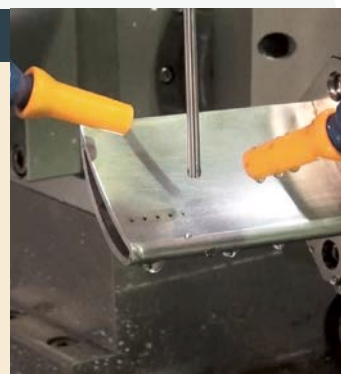


Even complex layouts with a large number of holes can be programmed easily!



### K3HS Options

- Column up (100/200mm)
- Intermediate guide
- Rotary table (WS-4P)
- Oscilloscope
- W-axis digital



# Specifications

Specification	K1C	K3HS
Table size (W x D)	250 x 350 mm	480 x 790 mm
X-/Y-/Z-axis travel	200 x 300 x 300 mm	300 x 400 x 300 mm
W-axis travel	250 mm	230 mm (NC control: option)
Max. workpiece weight	100 kg	300 kg
Max. workpiece size (W x D x H)	250 x 350 x 300 mm	470 x 780 x 285 mm
Applicable electrode diameter	ø 0.2 ~ ø 3.0 mm	ø 0.25 ~ ø 3.0 mm
Distance from guide bottom to table top	50 ~ 300 mm	55 ~ 285 mm
Distance from the floor to table top	1020 mm	995 mm
Machine dimensions (W x D x H)	890 x 870 x 2,015 mm	1,495 x 1,340 x 2,255 mm
Machine installation space (W x D) (not including maintenance space)	1,600 x 1,750 mm	1,495 x 1,740 mm
Machine weight	550 kg	1,280 kg
Dielectric fluid	VITOL-KS Fluid	De-ionized Water or VITOL-KS Fluid
Dielectric tank total capacity	20 litre*	150 litre
Dielectric fluid filtration method	Replaceable sponge filter	Replaceable paper filter HF-17
Rotary Table	Not available	Available as option
LN Assist software	Not available	Standard Feature

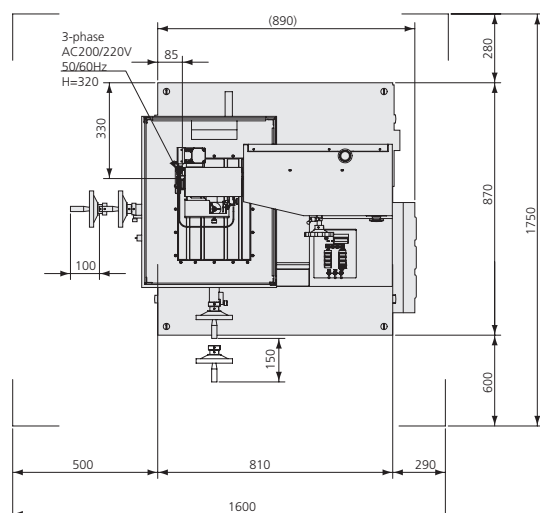
\*Additional 100 litre tank available as option on K1C

The dielectric chillers on Sodick machines contain either fluorinated greenhouse gas R410A or R407C.

Due to ongoing research, specifications are subject to change without prior notice.

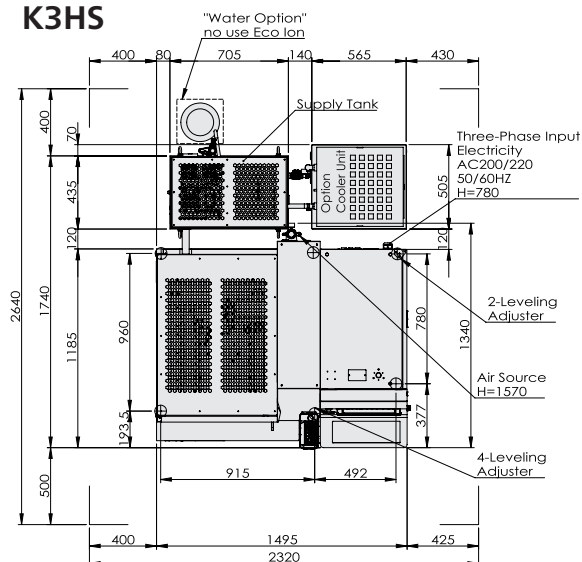
## Floor Layout

### K1C



Total height of machine is 2,015 mm

### K3HS



Total height of machine is 2,255 mm



Sodick Europe Ltd.

Agincourt Road  
Warwick, CV34 6XZ  
United Kingdom

create your future

Sodick Contact

Phone +44 (0) 19 2669 8888  
email [europe@sodick.eu.com](mailto:europe@sodick.eu.com)  
online [www.sodick.org](http://www.sodick.org)